

Federal Policy & Funding

Coalition Action Priority Groups
Facilitated Discussion

The Watershed Forum 2019



The CDRW 2019 Watershed-Wide Priorities:

- Watershed-Wide Planning
- **Federal Policy & Funding**
- State Policy & Funding
- Diversity, Equity, Inclusivity & Justice

Watershed-Wide Priorities

The Coalition for the Delaware River Watershed identifies policy priorities each year through a nomination and adoption process with its members.



Coalition *for the*
Delaware River
Watershed

CDRW Federal Policy Actions:

- Direct advocacy
 - Briefings, in-district engagements, Delaware River Watershed Hill Day
- Outreach and education
- Grassroots organizing

Federal Policy & Funding

CDRW will support federal policies and spending that promote a healthy watershed.



Coalition *for the*
Delaware River
Watershed

CDRW Federal Policy Priorities:

- Land and Water Conservation Fund
- Wild & Scenic Rivers and Partnership Rivers
- Water Infrastructure Investment and Clean Water Act

Federal Policy & Funding



Coalition *for the*
Delaware River
Watershed



Land and Water Conservation Fund

Kimberly Witt, Appalachian Mountain Club

Land and Water Conservation Fund

- CDRW Priority Statement
 - Permanent reauthorization and full, dedicated funding for the Land and Water Conservation Fund and support of pending projects within the Delaware River Watershed.
- Background
 - Authorizes \$900 million annually to fund land conservation and outdoor recreation projects
 - In operation for 55 years



LWCF in the Delaware River Watershed

- Cherry Valley National Wildlife Refuge
- Upper Delaware Scenic & Recreational River
- Delaware Water Gap National Recreation Area
- Great Swamp National Wildlife Refuge
- Tyler State Park
- Nockamixon State Park

LIFE & CULTURE

Massive acreage added to Pennsylvania's newest national wildlife refuge

Posted Sep 04, 2019



Thousands of acres have been added to Cherry Valley National Wildlife Refuge in eastern Pennsylvania through an effort led by The Conservation Fund.

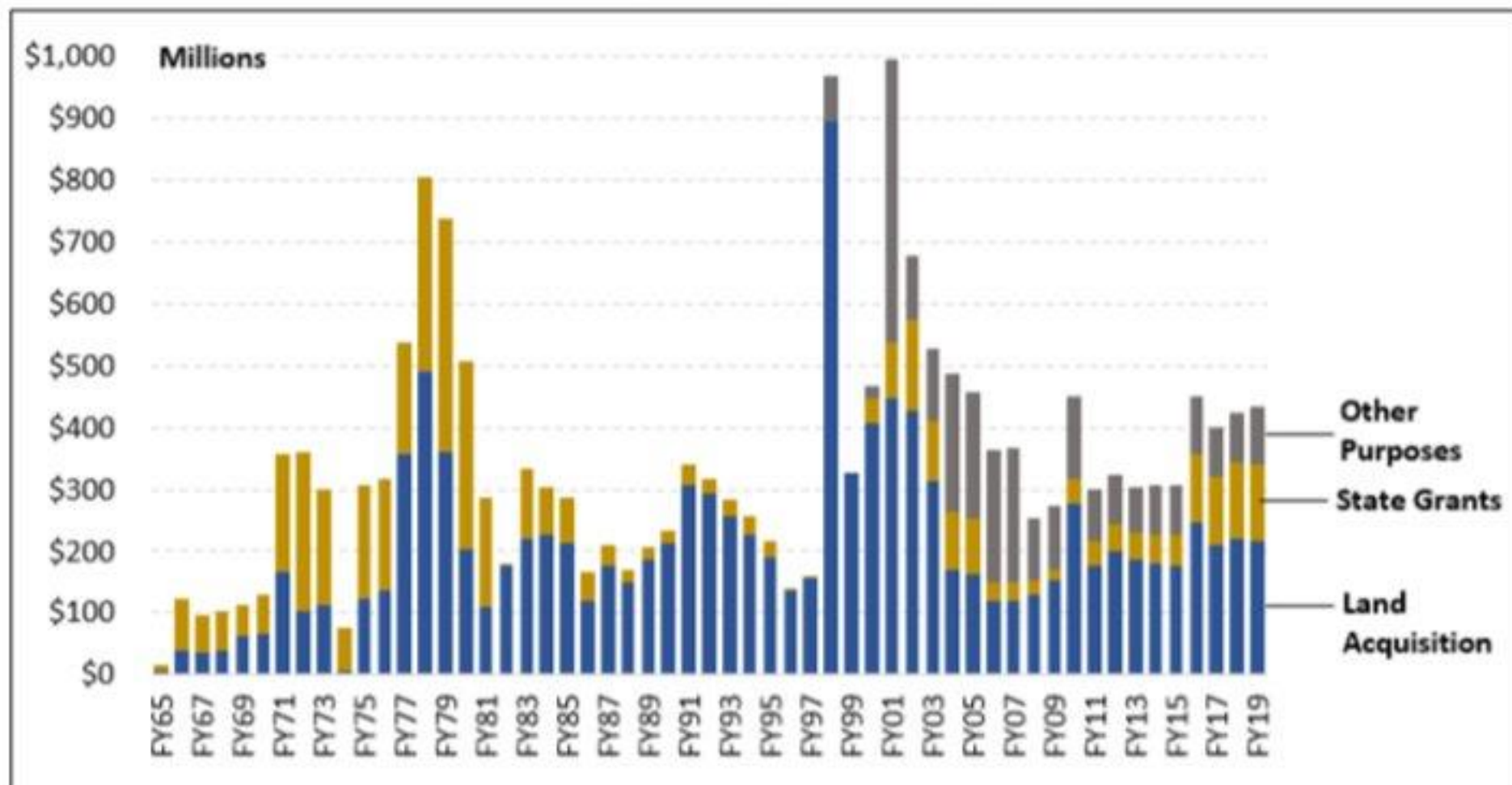
Land and Water Conservation Fund

- Permanent reauthorization victory with passage on John D. Dingell, Jr. Conservation, Management, and Recreation Act
 - March 2019
- Full \$900M authorized is not appropriated yearly
 - #SaveLWCF is now #Fund LWCF



Figure 4. LWCF Annual Discretionary Appropriations, FY1965-FY2019

(in millions of dollars, not adjusted for inflation)



Source: Graphic created by CRS. The primary source for the data is the DOI Office of Budget. Additional sources of information include the annual DOI *Budget in Brief* and congressional documents accompanying the annual Interior appropriations bill.

There is momentum behind the bills to fully fund LWCF at \$900 million annually

H.R. 3195, over 218 cosponsors

S. 1081, 50 cosponsors

Could this happen by Congressional recess in December?

Land and Water Conservation Fund



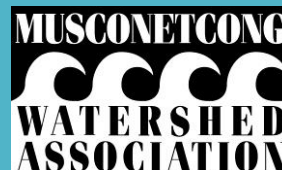


Wild & Scenic Rivers and Partnership Rivers

Alan Hunt, Musconetcong Watershed Association



MUSCONETCONG
River Management Council



Do you care about...

Free-flowing Rivers

Recreation

Historical and Cultural Resources

Wildlife Habitat

Archeological Resources

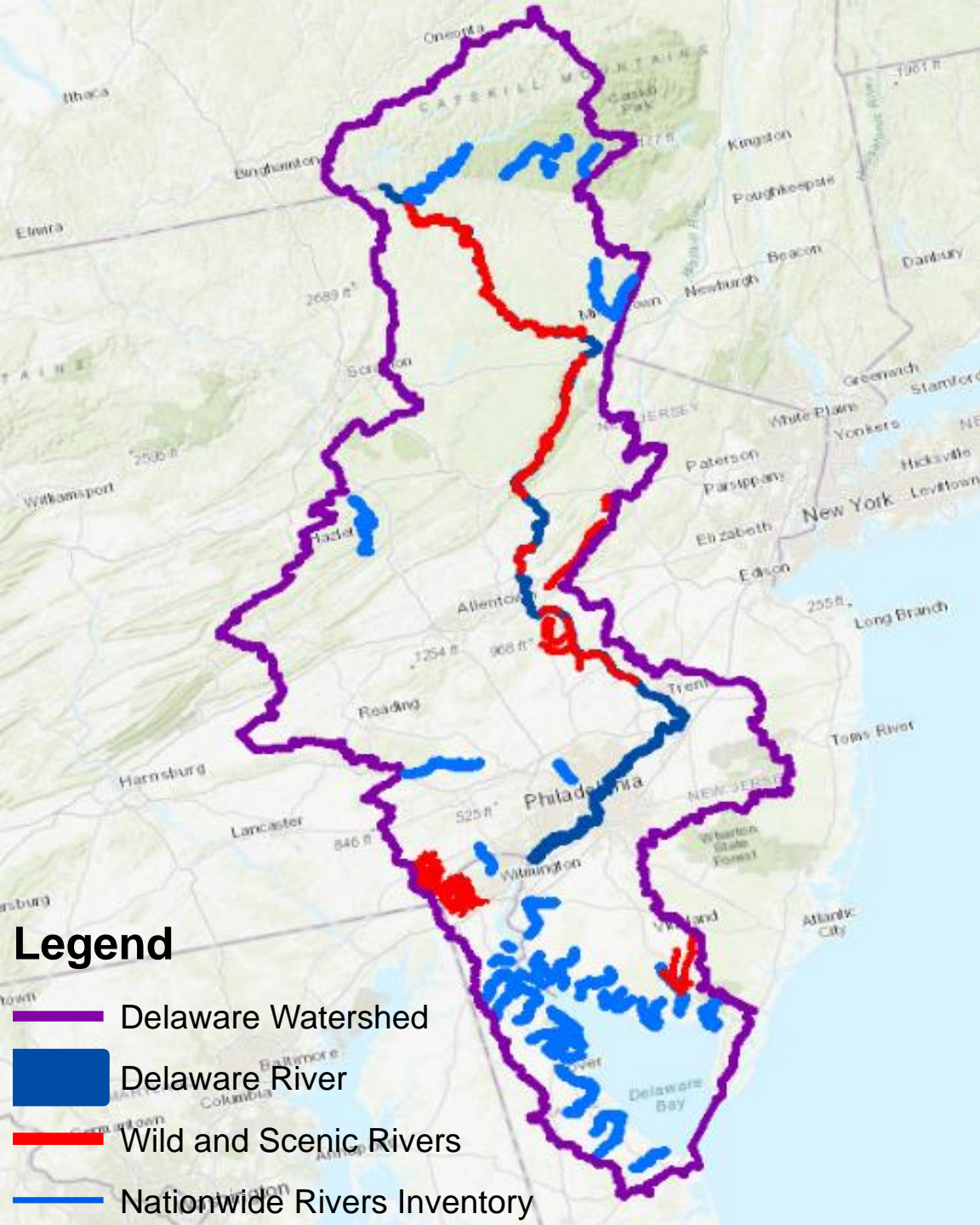
Geology

Scenic Views

Water Quality

These are all *Outstandingly Remarkable Values*





The Delaware River is the largest undammed American river east of the Mississippi River.

437 river miles have already been designated Wild and Scenic by Congress.

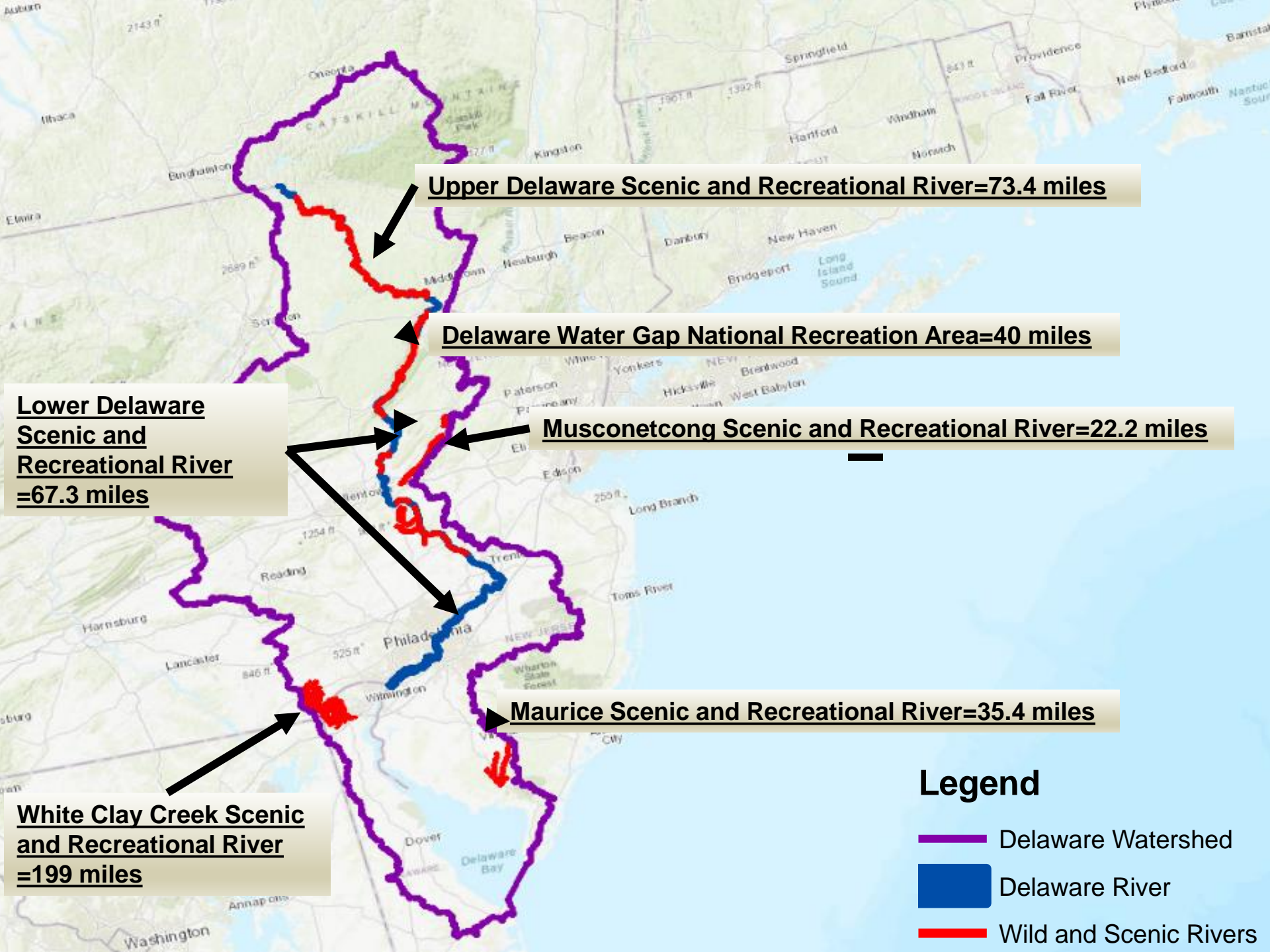
436 miles are listed by the National Park Service on the Nationwide Rivers Inventory as prequalified for designation.

Any other free flowing rivers in the Delaware Watershed could be studied for Federal Wild and Scenic designation.



Wild and Scenic Rivers in the Delaware Watershed

437.3 miles



**Delaware River
East Branch
=28 miles**

**Lehigh
River =23
miles**

**French
Creek =18
miles**

**Brandywine
Creek=6
miles**

Beaver Kill=31

Never Sink River East and West

**Mongaup Creek=2
miles**

Basher Kill=13 miles

**Wissahicken Creek=5
miles**

Nationwide Rivers Inventory in the Upper Delaware Watershed

158 miles

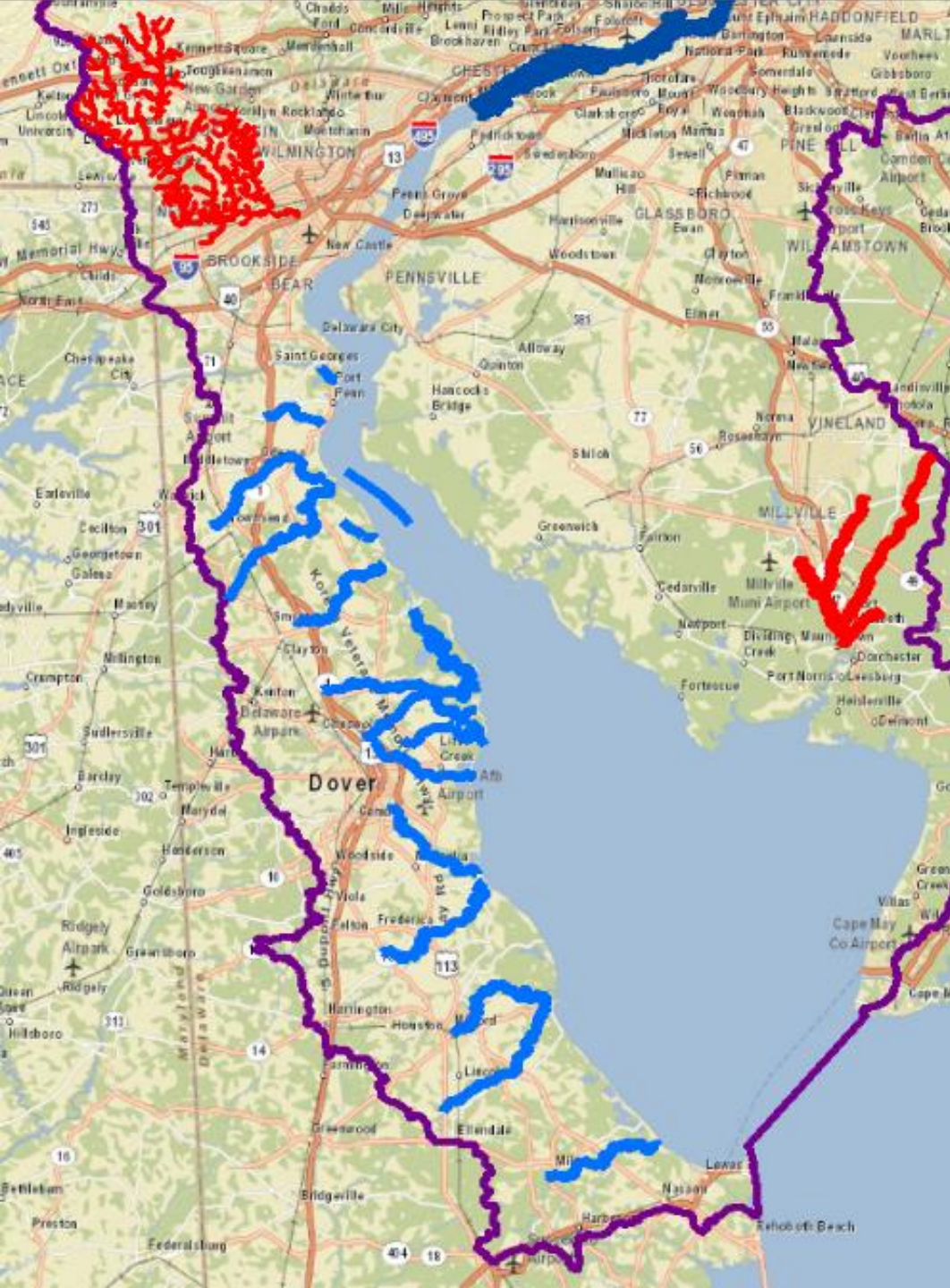


Legend

- Delaware Watershed
- Delaware River
- Wild and Scenic Rivers
- Nationwide Rivers Inventory



<https://www.nps.gov/subjects/rivers/nationwide-rivers-inventory.htm>



Nationwide Rivers Inventory in the Delaware Bayshore

19 Segments

168 miles

Appoquinimink River	15 miles
Augustine Creek	4 miles
Blackbird Creek	15 miles
Broadkill River	10 miles
Cedar Swamp	5 miles
Cedar Creek	7 miles
Duck Creek	12 miles
Herr Branch	13 miles
Leipsic River	19 miles
Little River	5 miles
Mahon River	3 miles
Mispillion River	9 miles
Muddy Branch	4 miles
Murderkill River	21 miles
Simons River and Green Creek	5 miles
Smyrna River	11 miles
St. Georges Creek	3 miles
St. Jones River	13 miles
Delaware River	4 miles
(Delaware River/Bay System)	168 miles



Legend

- Delaware Watershed
- Delaware River
- Wild and Scenic Rivers
- Nationwide Rivers Inventory

- Made a CDRW Federal Appropriations Priority in 2018
 - Included in 2018 Hill Day Outreach
 - CDRW shared the PWSR Appropriations Request Letter
 - Forum Breakfast Roundtable
 - Tim Palmer, Forum Guest Speaker
- CDRW Priority Expanded in 2019 to include outreach to CDRW
 - Included in 2018 Hill Day Outreach
 - CDRW shared the PWSR Appropriations Request Letter
 - July PWSR Webinar
 - October Forum Presentation



Coalition *for the*
Delaware River
Watershed

Wild & Scenic River Priority Activities



Learn More About Partnership Rivers

Toolkit:

<https://rms.memberclicks.net/PWSRToolkit>



Clean Water Infrastructure Investment and Clean Water Act

Liz Deardorff, American Rivers

Clean Water Act

- 💧 Passed in 1972
- 💧 Jurisdiction:
 - 💧 All waters of the United States
 - 💧 The Nation's waters
- 💧 Application of rules:
 - 💧 Navigable waters
 - 💧 Interstate commerce
 - 💧 Surface waters



A CDRW Priority to Support

What is the reach of the Clean Water Act?



Clean Water Rule

Adding clarity to the question of jurisdiction

Waters of the United States (WOTUS)

- 💧 Development of the Rule through the administrations: Bush, Obama, Trump
- 💧 Trump administration
 - 💧 Repeal of Clean Water Rule
 - 💧 Repeal litigated
 - 💧 New “Dirty” Water Rule
- 💧 Who decides:
 - 💧 Courts
 - 💧 Legislature
 - 💧 Agencies
 - 💧 People

Clean or Dirty Water Rule



- 💧 Federal Funding for Infrastructure
 - 💧 The Clean Water State Revolving Fund
 - 💧 The Drinking Water Revolving Fund
 - 💧 The Green Project Reserve
- 💧 Needs far exceed appropriations
- 💧 Dwindling federal resources or commitment drives
 - 💧 Diversity
 - 💧 Competition
 - 💧 Innovation

Water Infrastructure-Funding



CDRW supports SRF & GPR increases for Delaware basin



- Annual SRF appropriations and GPR set aside allocation
- Water Quality Protection and Job Creation Act
- Water Infrastructure Funding Transfer Act

Water Infrastructure-Funding



What are the current resource opportunities?