

Delaware River Basin Commission

Overview of Basin Water Resource Management and Water Use

Steve Tambini
Executive Director

September 25, 2018

Coalition for the Delaware River Watershed Forum



Delaware River Basin Commission

DELAWARE • NEW JERSEY
PENNSYLVANIA • NEW YORK
UNITED STATES OF AMERICA

The Inquirer
DAILY NEWS philly.com

Tuesday, August 21, 2018

NEWS SPORTS BUSINESS OPINION POLITICS ENTERTAINMENT LIFE FOOD HEALTH REAL ESTATE OBITS JOBS

Advertisement

Entertainment

I tried, and enjoyed, Philly paddleboard yoga over the dirty Delaware River

Updated: JUNE 22, 2018 — 10:27 AM EDT

Autos | Real Estate | Jobs | Classifieds

September 20, 2018

Newton, NJ

66°

New Jersey Herald

NEWS SPORTS OPINION OBITUARIES YOUR LIFE PHOTOS & VIDEOS WEATHER

News

Sojourners paddle down the Delaware



SECTIONS SEARCH

THE MORNING CALL

THURSDAY SEP. 20, 2018

BREAKING SPORTS VARSITY THINGS TO DO INSIDER GUIDE OBITS E-NEWSPAPER REVIEWS

f t e

Sports

Shad fishing on the Delaware right around the corner



#4theDelaware

15 MILLION

PEOPLE DEPEND ON THE **DELAWARE RIVER**
FOR DRINKING WATER

15 MILLION REASONS TO STAND UP FOR CLEAN WATER

A CAMPAIGN TO PROTECT THE REGION'S WATER, WILDLIFE, AND JOBS



#4theDelaware

15 MILLION

PEOPLE DEPEND ON THE **DELAWARE RIVER**
FOR DRINKING WATER

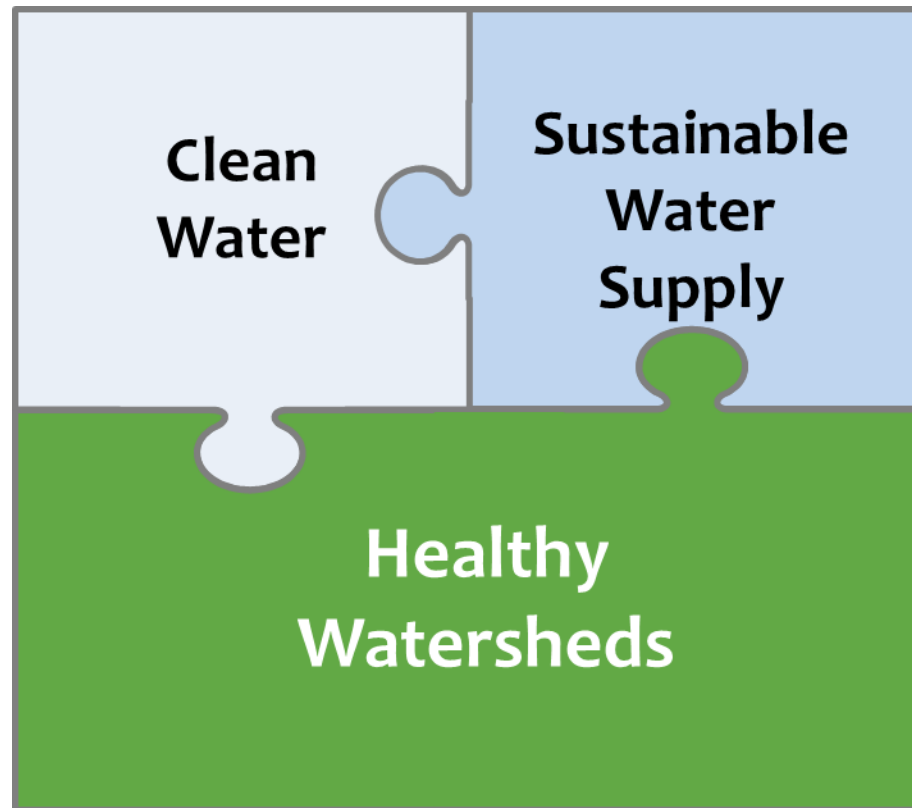
15 MILLION REASONS TO STAND UP FOR CLEAN WATER

A CAMPAIGN TO PROTECT THE REGION'S WATER, WILDLIFE, AND JOBS

Over 17 Million people rely on the Delaware for drinking water including in New York, Philadelphia and South Jersey

The Delaware River Basin extends from the Catskills in New York to parts of New Jersey, Pennsylvania, Delaware, and Maryland, and is a vital water source for over 17 million people, about five percent of the nation's population. Due to the watershed's

Five Questions



#1 What type of water user withdraws the most water in the Basin?

- a) Public water suppliers
- b) Farmers
- c) Power generators
- d) Large Industry

#1 What type of water user withdraws the most water in the Basin?

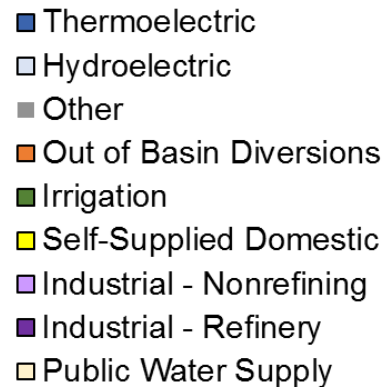
a) Public water suppliers

b) Farmers

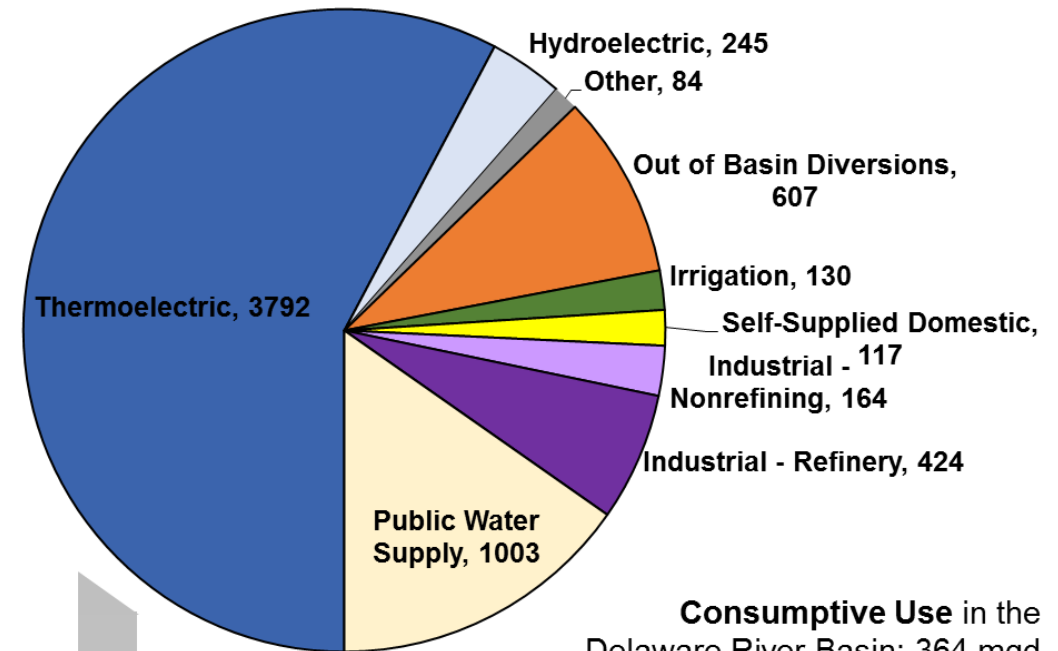
c) Power generators

d) Large Industry

Total Water Withdrawals (ground and surface) from the Delaware River Basin: 6,565 mgd



Major Exports from the Delaware River Basin: 607 mgd



Consumptive Use in the Delaware River Basin: 364 mgd

In 2016: 6.565 billion gallons per day (BGD) withdrawn. 4.037 BGD withdrawn by power generators.

There are 46 power generators with DRBC approvals: PA-27; NJ-14; DE-4; NY-1

#2 What is “consumptive” water use?

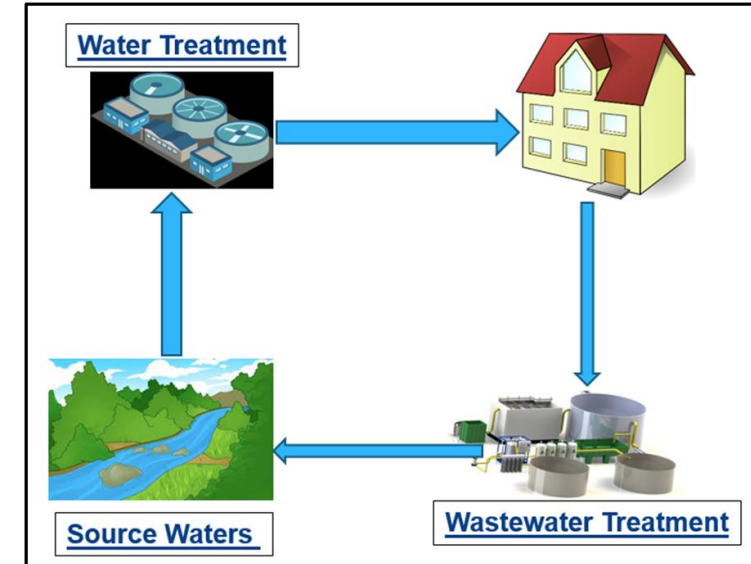
- a) Water consumed in our bodies.
- b) Water withdrawn and not returned to the Basin.
- c) Public water supply use.
- d) All water used.

#2 What is “consumptive” water use?

- a) Water consumed in our bodies.
- b) Water withdrawn and not returned to the Basin.**
- c) Public water supply use.
- d) All water used.



Consumptive use



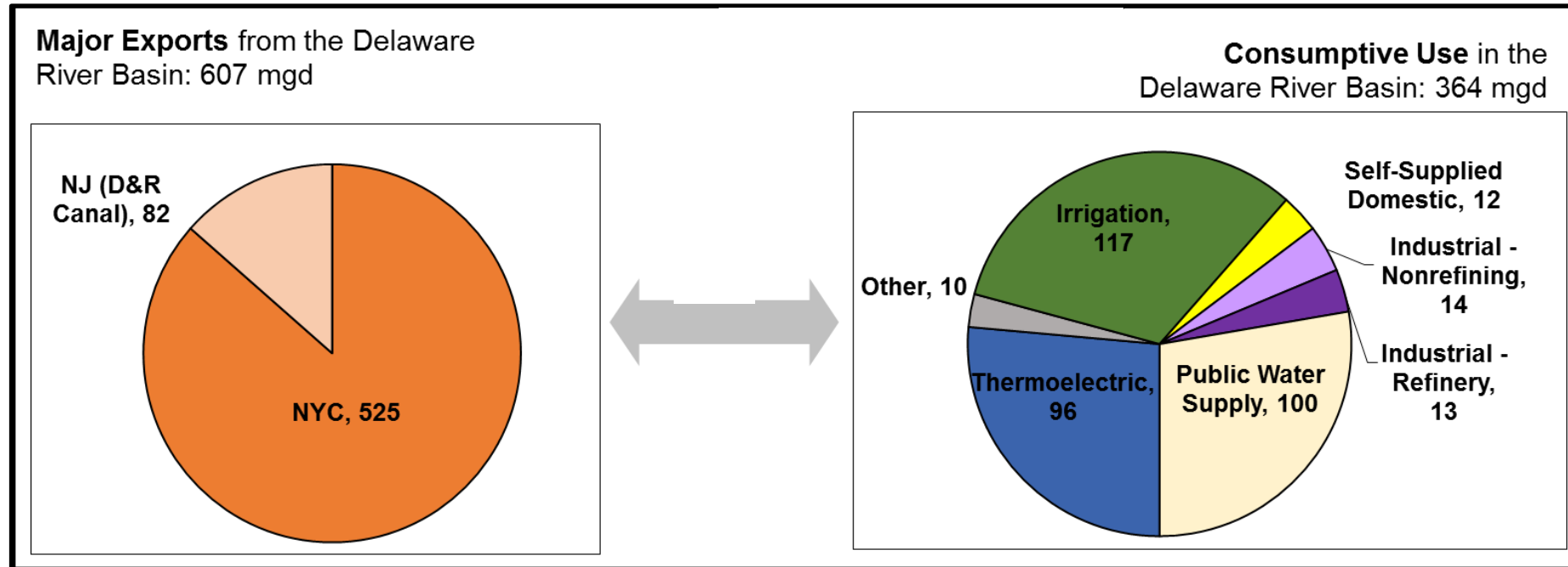
Non-consumptive use

#3 What is the largest consumptive use from the Delaware River Basin?

- a) Public water suppliers
- b) Farmers
- c) Power generators
- d) Exported water

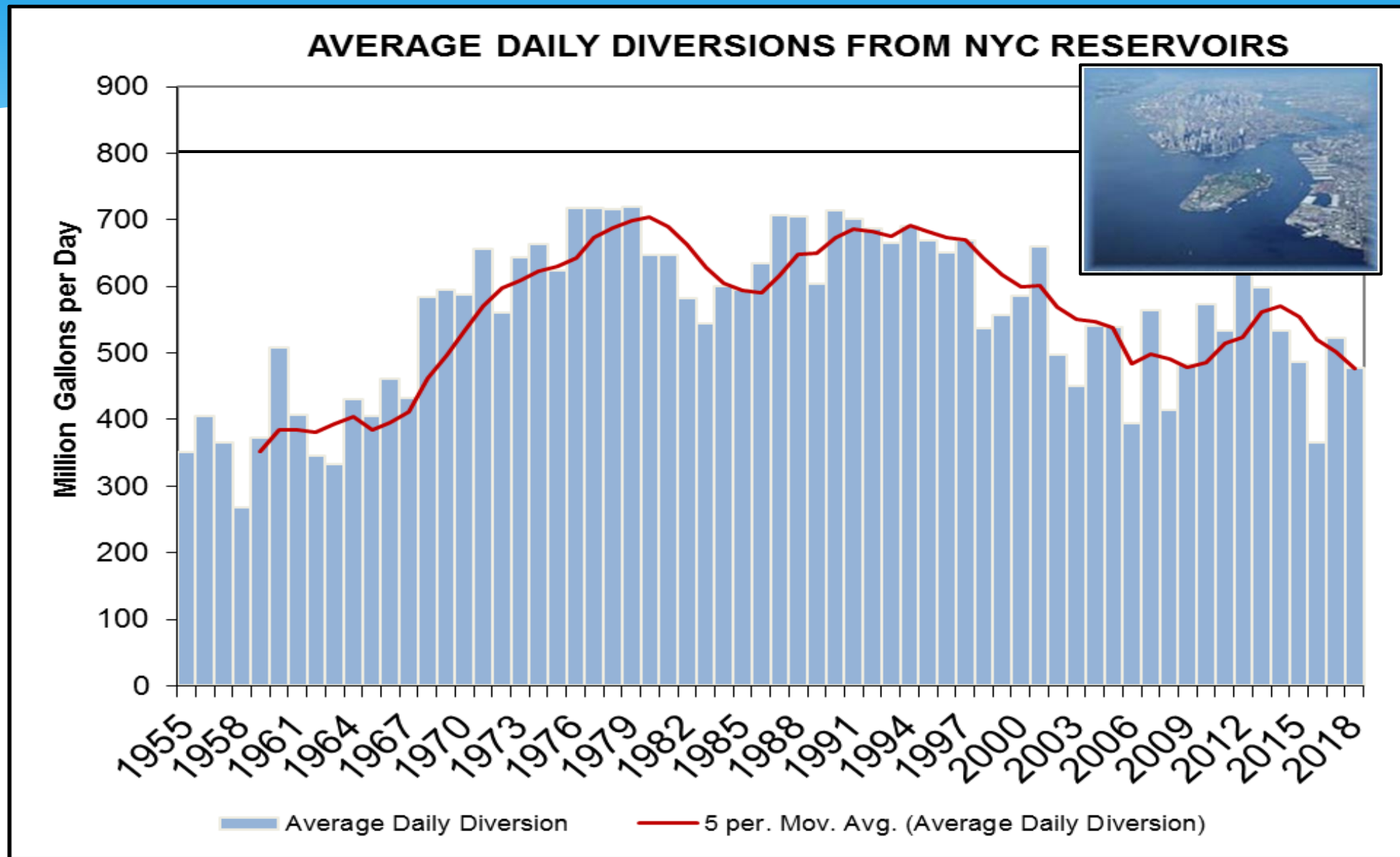
#3 What is the largest consumptive use from the Delaware River Basin?

- a) Public water suppliers
- b) Farmers
- c) Power generators
- d) Exported water

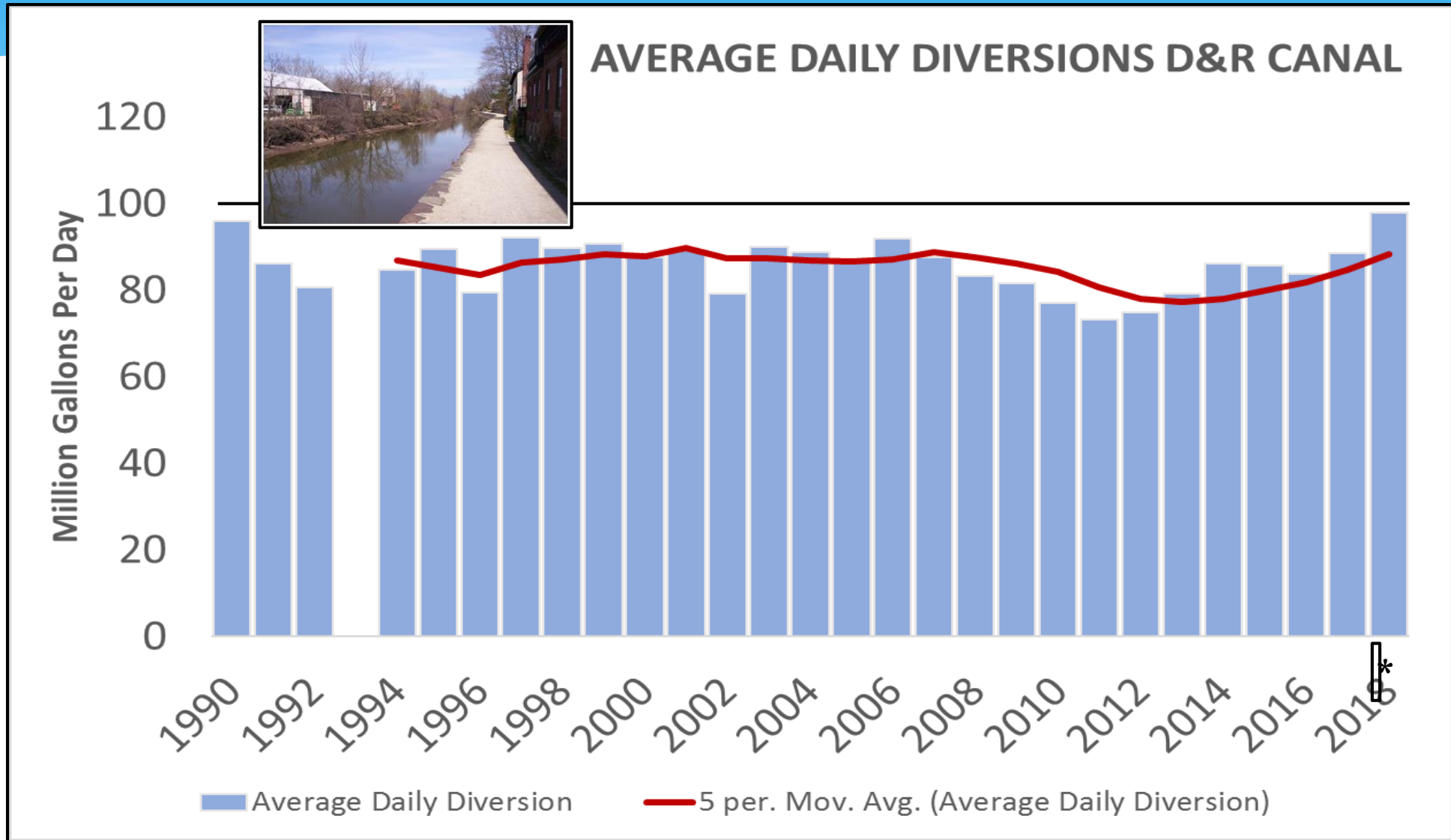


In 2016: NYC Exported 525 million gallons per day (MGD); NJ Exported 82 MGD.

Water Exported to New York City from Delaware River Basin 1955 - 2018



Water Exported to NJ via D & R Canal from Delaware River Basin 1990 - 2018

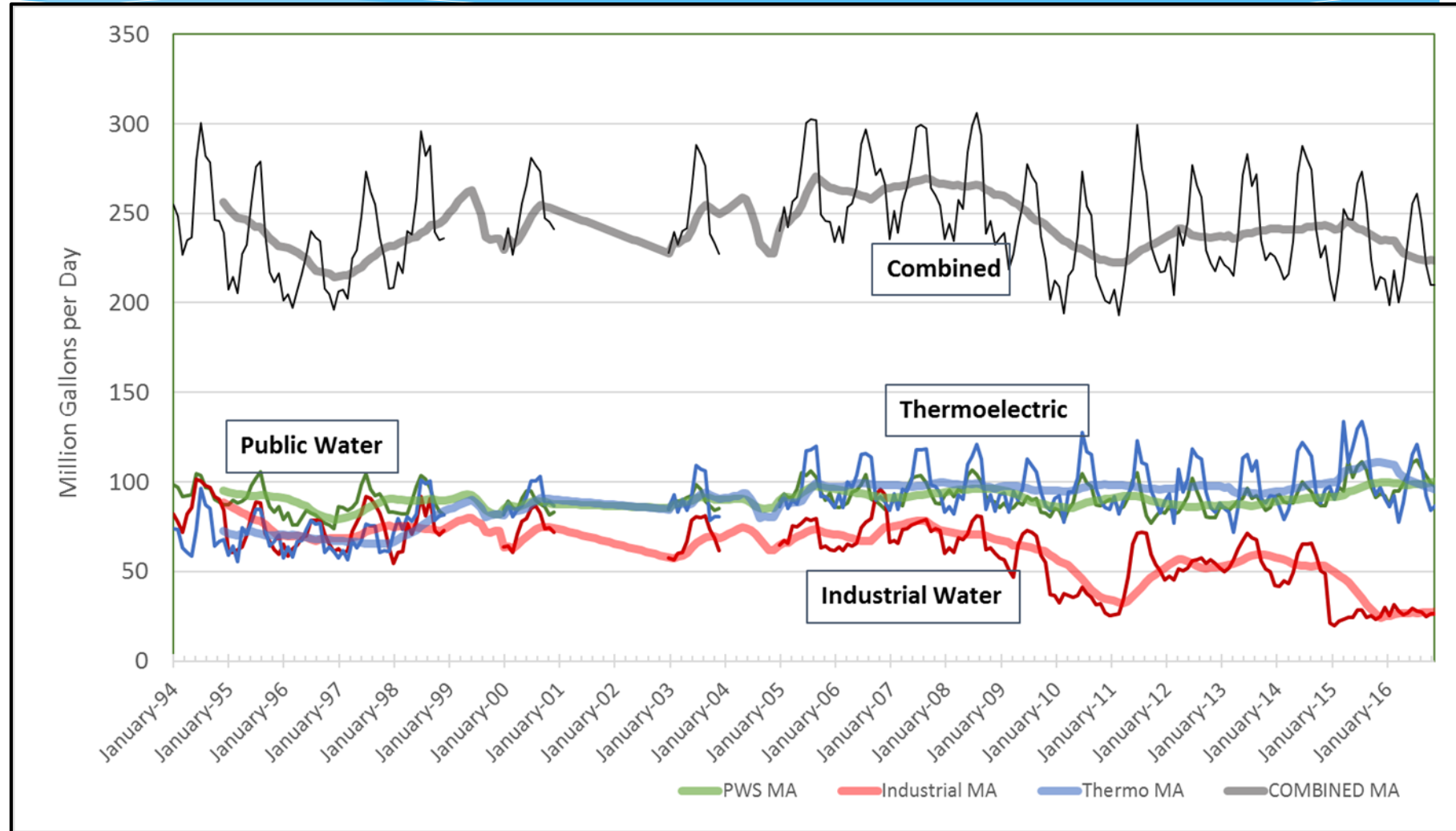


#4 Consumptive Water Use over the past 25 years is...

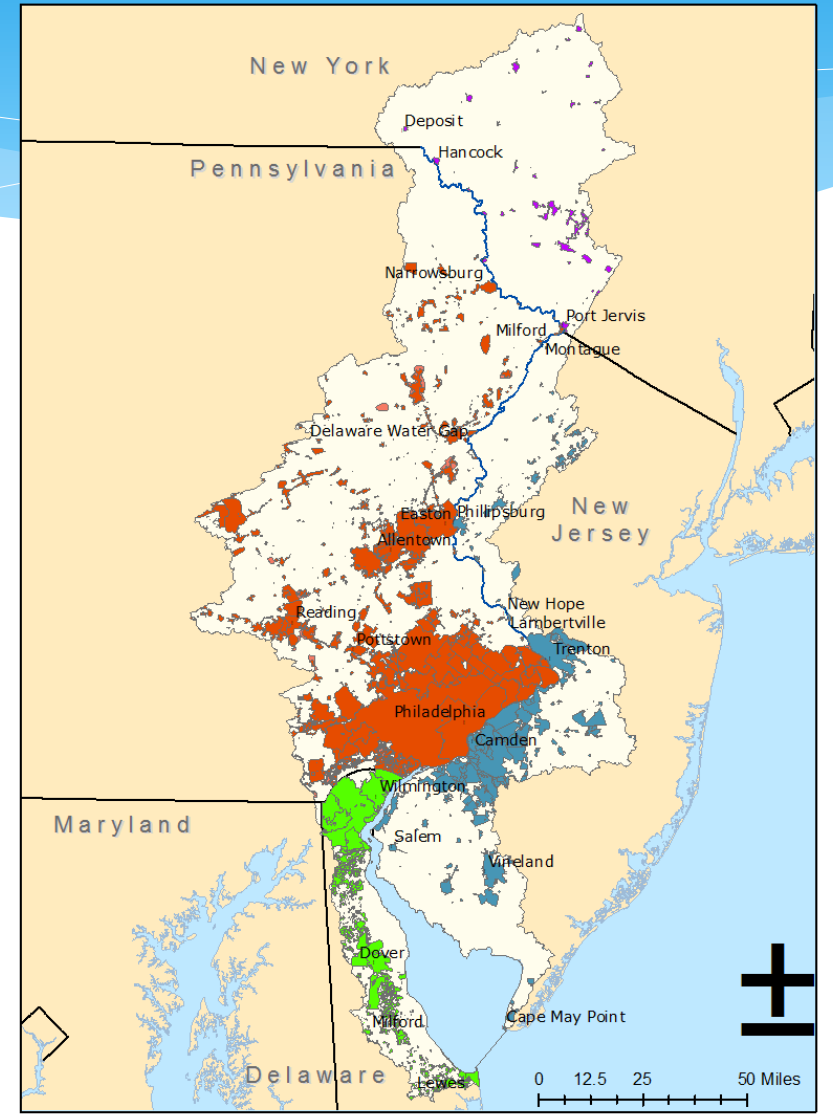
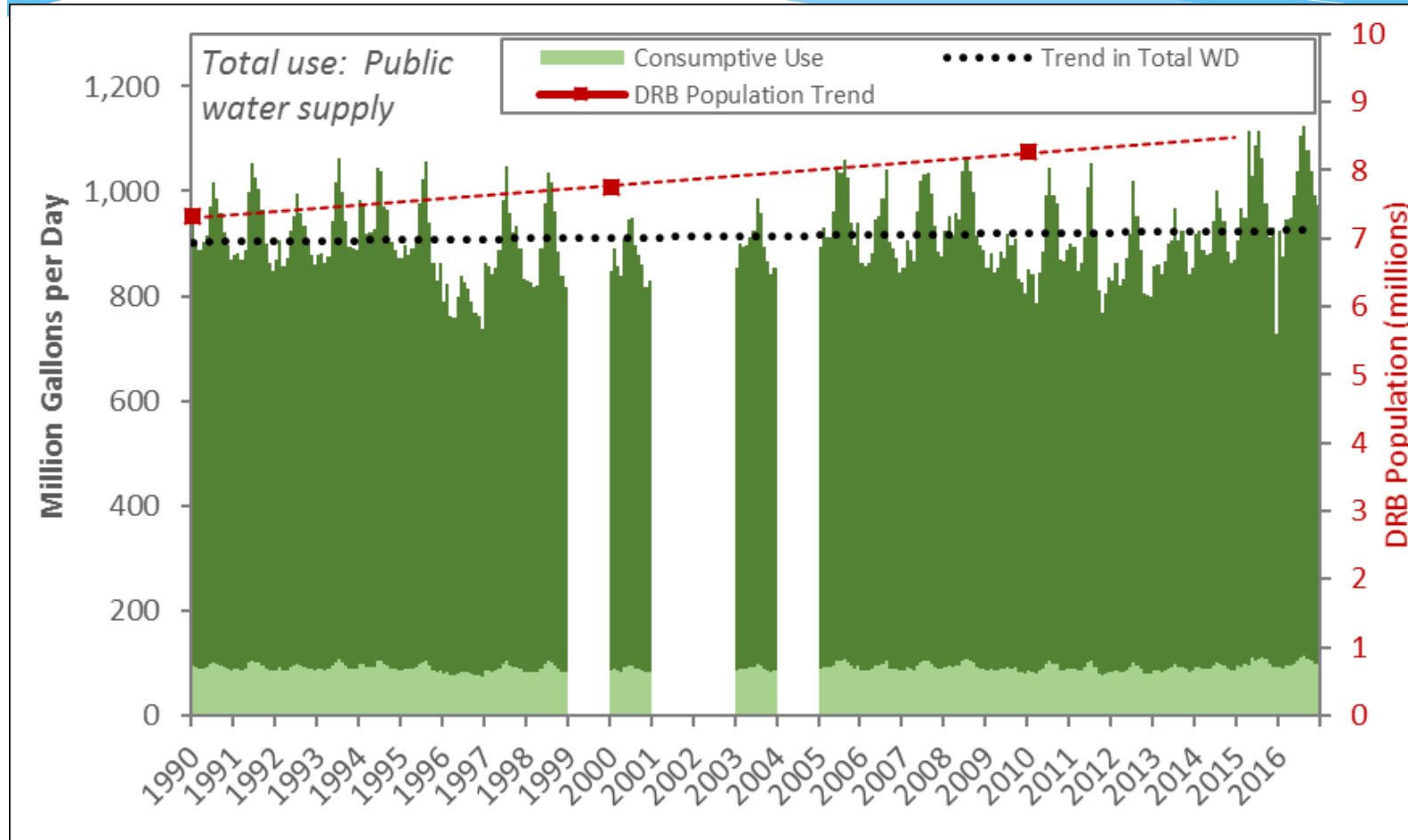
- a) Increasing
- b) Decreasing
- c) About the same
- d) It depends upon
the use

#4 Consumptive Water Use over the past 25 years is...

- a) Increasing
- b) Decreasing
- c) About the same
- d) It depends upon the use



Public Water Supply Consumptive Use vs Population Growth in the Basin



#5 The Delaware River is...






- a) Wild and Scenic
- b) Engineered and Managed
- c) Clean and Protected
- d) Polluted and threatened
- e) All of the above

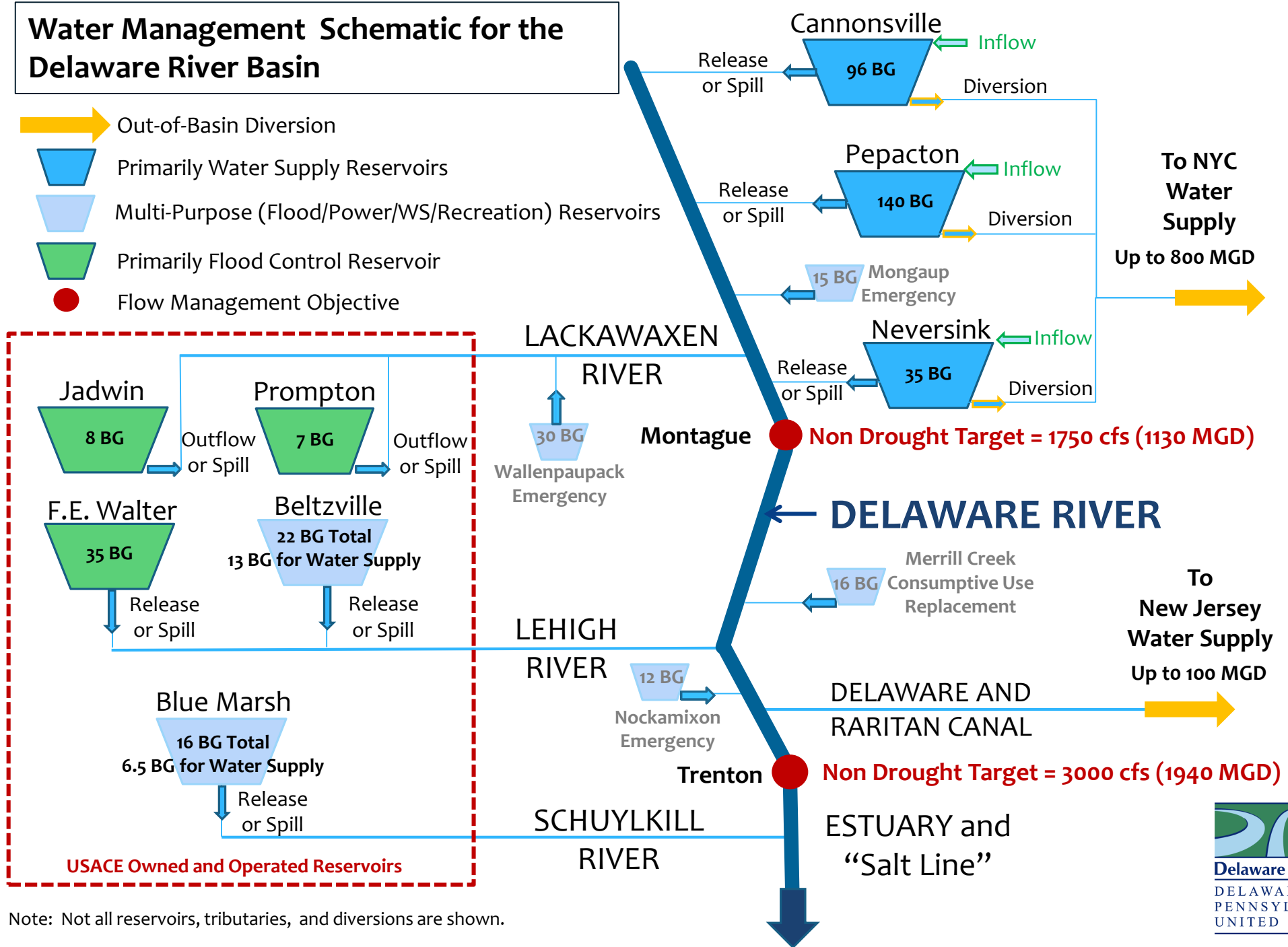
#5 The Delaware River is...

- a) Wild and Scenic
- b) Engineered and Managed
- c) Clean and Protected
- d) Polluted and threatened
- e) All of the above



Water Management Schematic for the Delaware River Basin

-  Out-of-Basin Diversion
-  Primarily Water Supply Reservoirs
-  Multi-Purpose (Flood/Power/WS/Recreation) Reservoirs
-  Primarily Flood Control Reservoir
-  Flow Management Objective



Note: Not all reservoirs, tributaries, and diversions are shown.

What do water users care about?



Fish Consumption Advisories

NUTRIENTS

Dissolved Oxygen

Contaminants of Emerging Concern

Bacteria

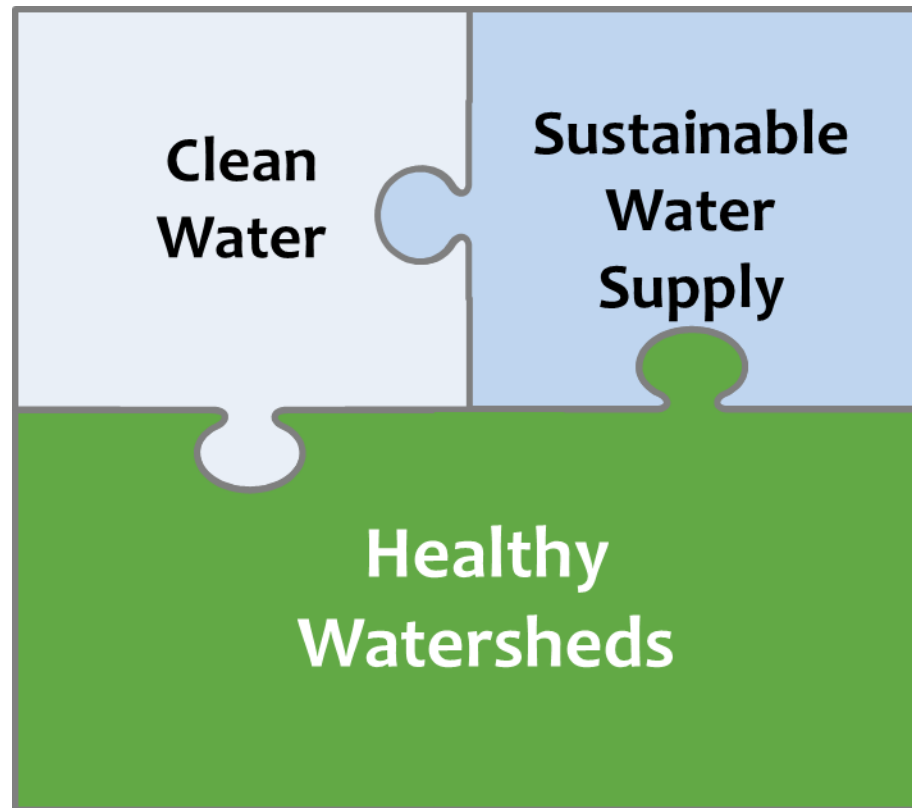
Toxics

Antidegradation of waters

Perflourinated Compounds

Non-point source pollution

Legacy Pollutants / PCBs



Salinity Control

Drought Management

Water Budgets

Fair allocation and interference

Climate Change

Flood Loss Reduction

Reservoir Storage

Water Efficiency

Steve Tambini, Executive Director

Steve.Tambini@drbc.nj.gov

www.drbc.net



Delaware River Basin Commission

DELAWARE • NEW JERSEY
PENNSYLVANIA • NEW YORK
UNITED STATES OF AMERICA

*Managing Our Shared Water
Resources since 1961*