



Leveraging Agricultural BMPs with Wildlife Habitat on Working Lands in South Jersey

Kristen Meistrell, Stewardship Project Director – South, New Jersey Audubon

Delaware River Watershed Forum, September 25th -26th, 2018



New Jersey: The Garden State

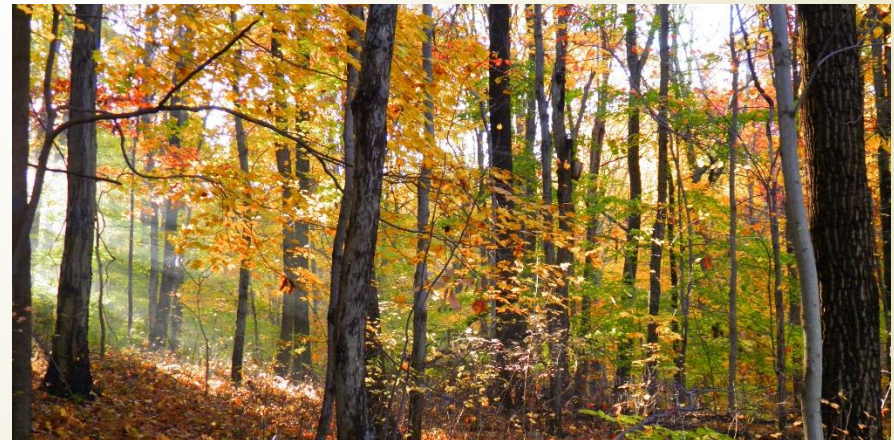
New Jersey has the highest population density in the US, averaging 1,030 people per square mile. It is the only state where all 21 counties are considered a metropolitan area



New Jersey is made up of about 790,000 acres or 16.7% of productive farmland

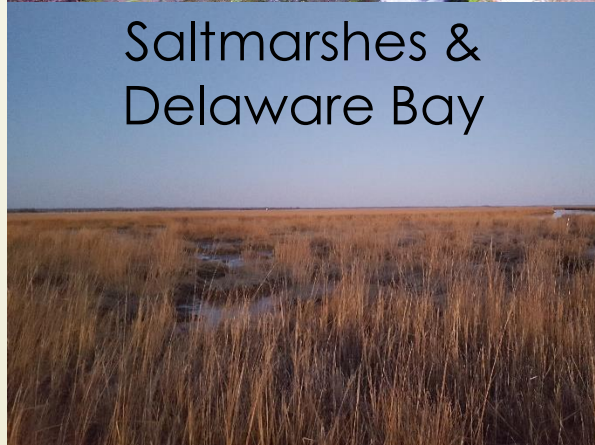


The Garden State also boasts over 2.1 million acres or 45% of forest land





Diverse Habitats in NJ



Diverse Habitat Means Diverse Wildlife

Over 460 birds
Over 250 nesting birds
79 reptiles and
amphibians
400 fish
90 mammals
100 butterflies
Thousands of moths,
dragonflies, and other
insects

To put things into
perspective, Alaska has:
102 mammals
10 reptiles and amphibians
150 fish
425 birds





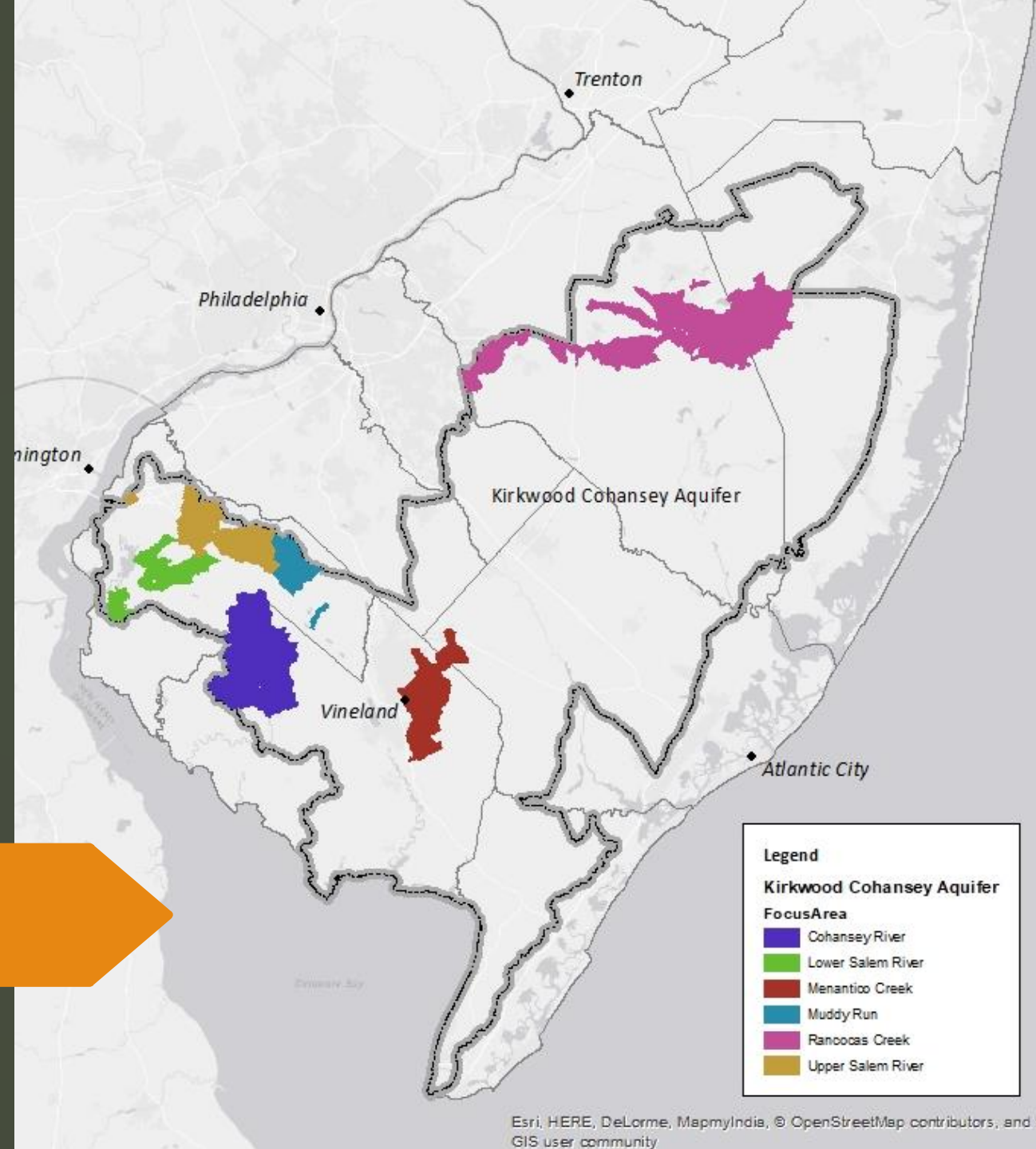
Private Lands & Natural Resources

According to NJDEP,
approximately 81.7% of all
land in NJ is privately owned

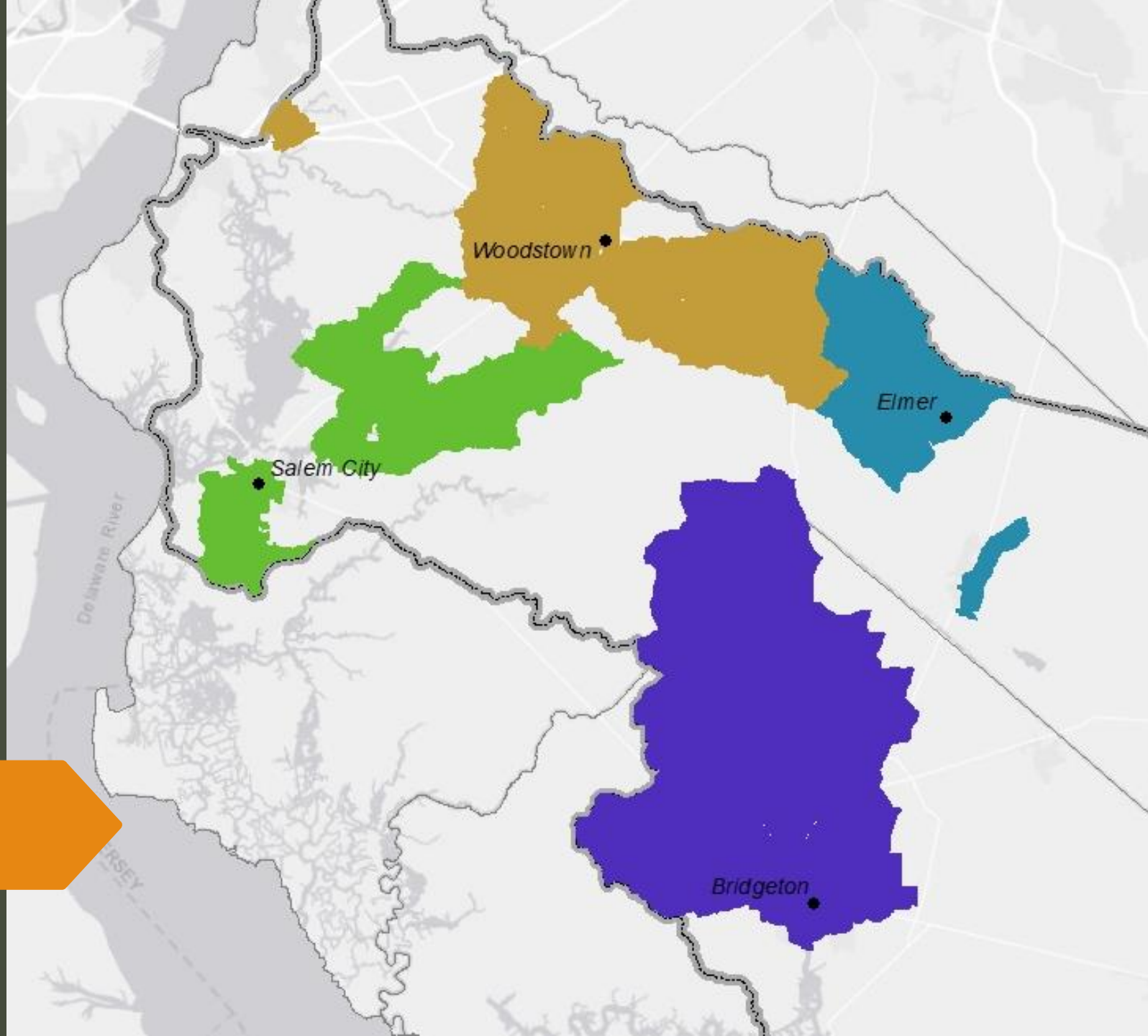
According to US Fish and
Wildlife Service, nearly half of
all federally protected
species rely on habitat that is
on private lands



The Kirkwood Cohansey Aquifer: Voluntary Restoration on Private Lands



Agricultural Restoration Focus Areas





Southern New Jersey

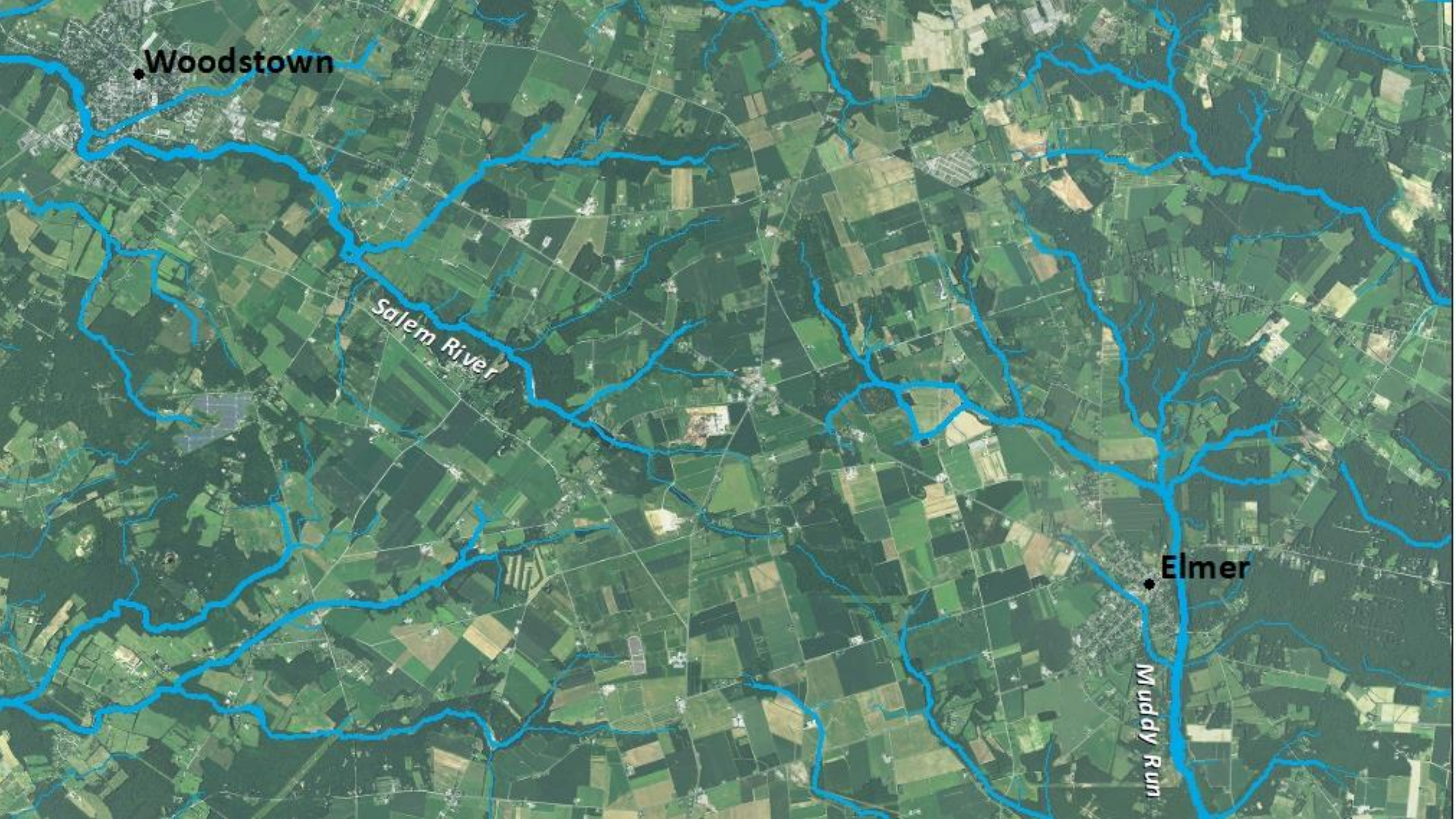


Woodstown

Salem River

Elmer

Muddy Run



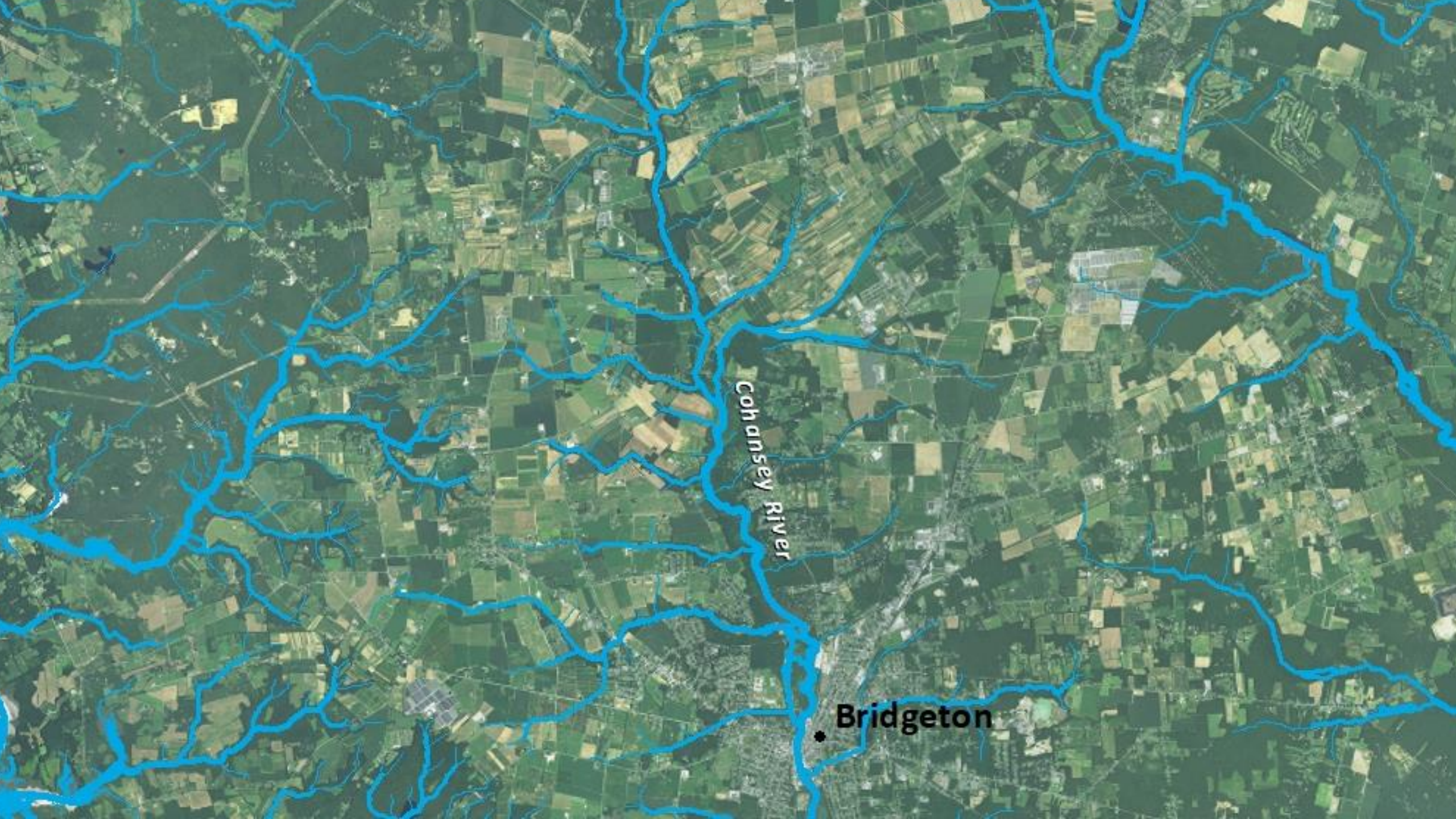


Salem River

Woodstown

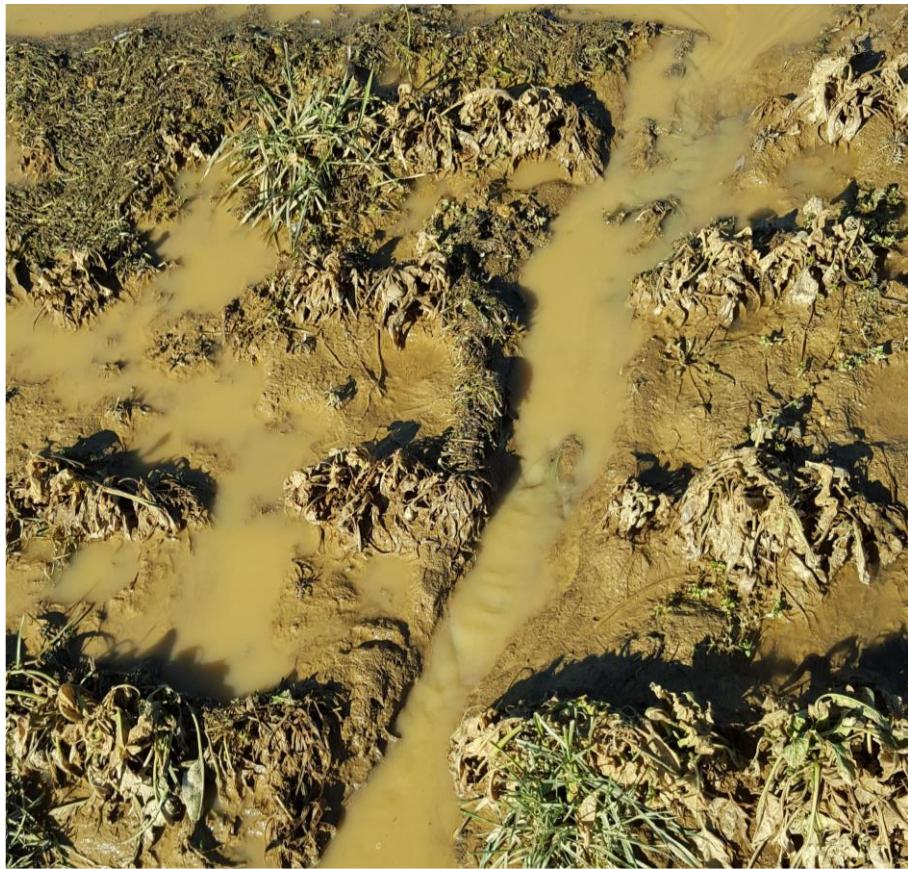
Mannington Creek

Salem City



Cohansy River

• Bridgeton





Enrollment is now open for New Jersey Audubon's Healthy Land and Waters Grants



Calling all producers who are interested in improving soil and water quality!
If your land falls within one of our focal areas on the reverse side, **this program is for you!**

New Jersey Audubon is offering incentive payments to South Jersey farmers to reduce water consumption, build soil health, and improve water quality through a number of eligible practices. If you qualify, you could earn hundreds of dollars per acre while investing in a healthier watershed!

You could fix this...

Address or redirect water pooling
Protect and build up soil health
Provide pollinator or wildlife habitat
Reduce water consumption and fuel
Protect natural waterways from runoff

By implementing this...

Diversion, Grassed waterway
Cover crops, crop rotation, reduced till
Conservation cover
Irrigation upgrades
Filter strips, riparian buffers

And we will help cover some expenses!

For more information, contact New Jersey Audubon Staff:

Brittany Phone: 609-400-3826 Email: Brittany.dobrzynski@njudubon.org

Kristen Phone: 609-400-3843 Email: Kristen.meistrell@njudubon.org

Farmers who have an existing or new contract with the Natural Resource Conservation Service (NRCS) or Farm Service Agency (FSA) are preferred; however, if you do not qualify for NRCS or FSA funding, we may still be able to help!

- ▶ NJ Audubon rolled out the Healthy Land & Waters Grant program that provides technical and financial assistance to producers in the KC Cluster who are implementing practices that build soil health, improve water quality, and restore wildlife habitat:
 - ▶ Riparian buffers & filter strips
 - ▶ Cover crops
 - ▶ Till management
 - ▶ Pollinator habitat
 - ▶ Grassed waterways
 - ▶ And more!



Whole Farm Conservation

Combining on-farm practices, such as no-till and cover crops...



Providing technical and financial resources to make it happen!



...with wildlife habitat, such as riparian buffers and pollinator habitat



Outreach is Key



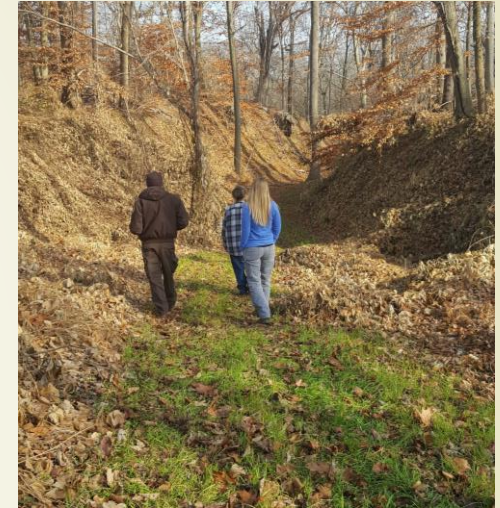
Connecting with the Landowner/Producer

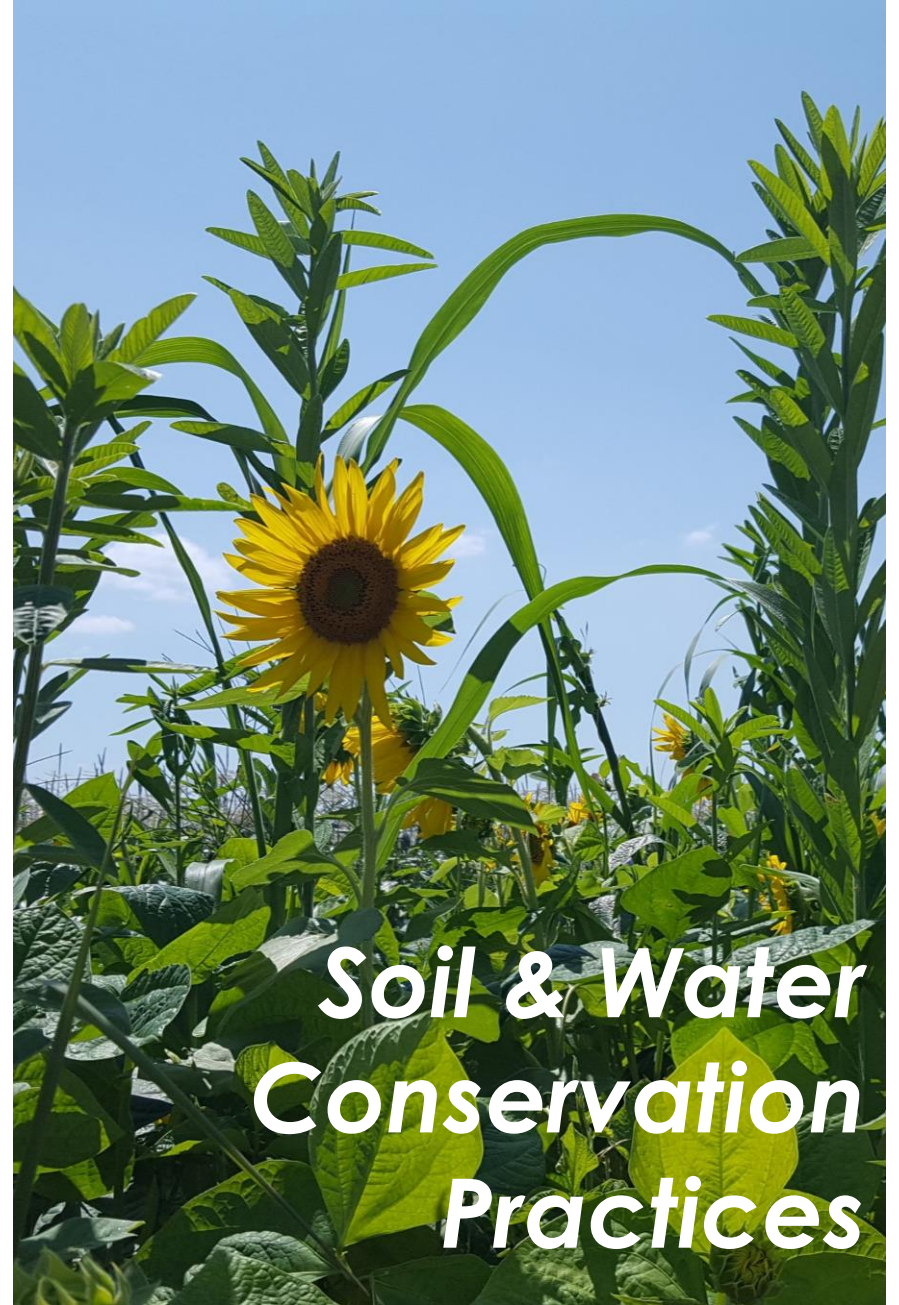




Gathering Information

- Discuss goals for the property/operation
- Identify **their** concerns or issues
- Walk the property and identify additional resource concerns
- Identify wildlife habitat opportunities that fit their operation
- Ask questions!





**Soil & Water
Conservation
Practices**



Wildlife Habitat on Working Lands

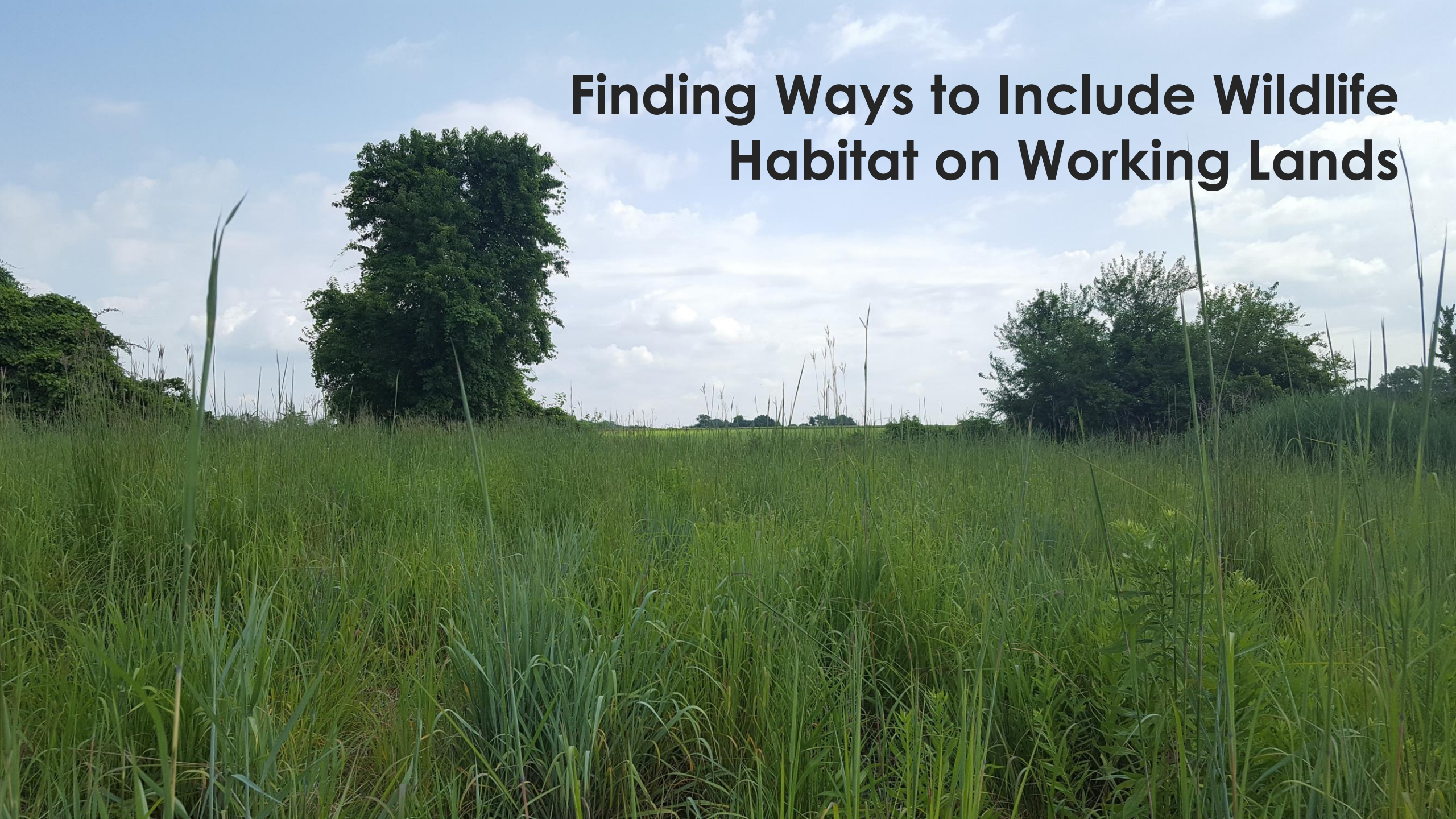


Wildlife Considerations

- Identify what habitat types exist on the property
- Identify what species may be using those habitats
- Look beyond the property boundaries
- Many wildlife species can co-exist with agriculture!



Finding Ways to Include Wildlife Habitat on Working Lands





WILDLIFE HABITAT RESTORATION SITE

MOWING RESTRICTED POLLINATOR HABITAT CREATION IN PROGRESS

This site has a restricted mowing
schedule to establish native wildflowers
and create pollinator habitat.



NEW JERSEY
AUDUBON
www.njaudubon.org

For more information
call the
New Jersey Audubon
Stewardship
Department
at
609-861-0700





Resources are Available!

- ▶ USDA Conservation Programs, including:
 - ▶ Environmental Quality Incentives Program (EQIP)
 - ▶ Working Lands for Wildlife
 - ▶ Conservation Reserve Enhancement Program (CREP)
 - ▶ Wetlands Reserve Easement (WRE)
- ▶ US Fish and Wildlife Partner's for Wildlife Program
- ▶ Other State and Federal Conservation Programs
- ▶ Private Funding
- ▶ Delaware River Watershed Initiative Funding



NFWF

