

How Townships Can Use PA's Dirt, Gravel, Low Volume Road Program To Protect Recreational Uses in Streams

September 26, 2018



ENVIRONMENTAL
FINANCE CENTER

DGLVR PROGRAM BASICS

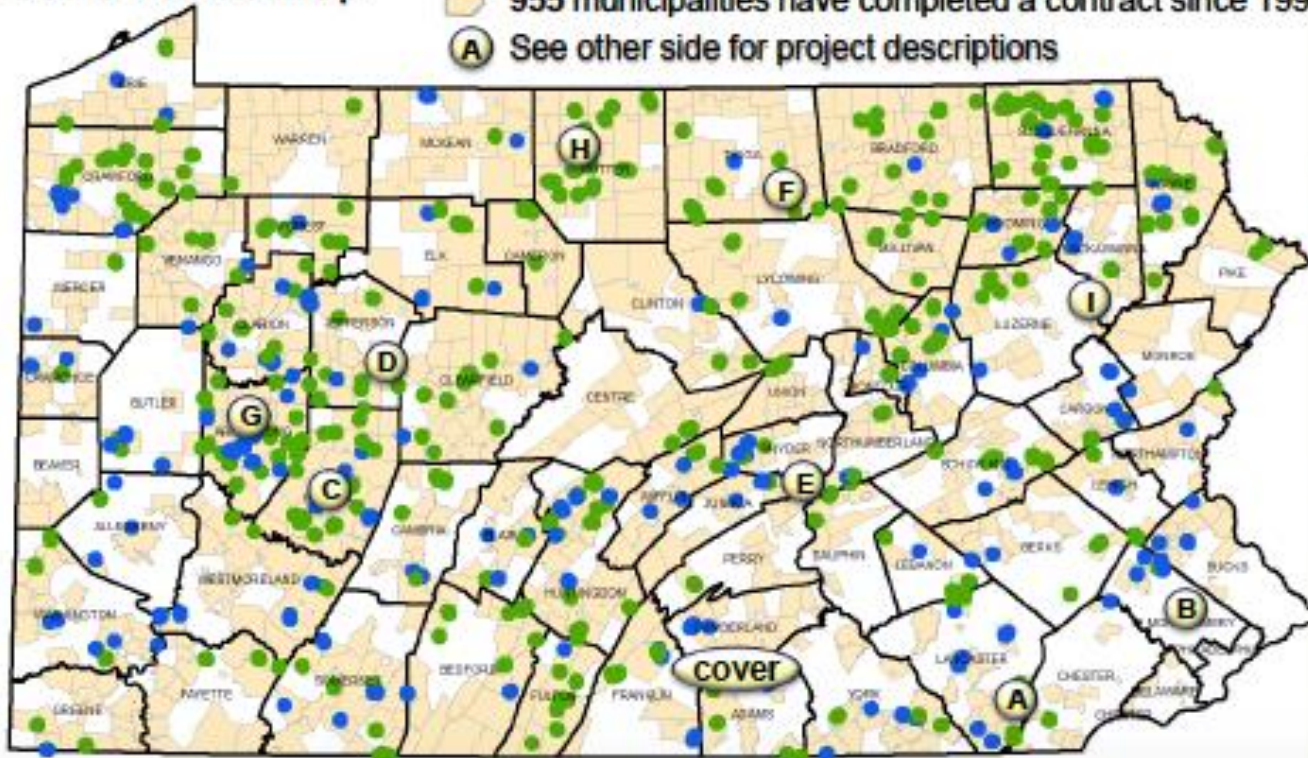
- ***Work of PA Chapter of Trout Unlimited!***
- **Established in 1997 under PA Motor Vehicle Code Title 75 Chapter 91 Sec 9106**
- **25,000 miles of unpaved roads in PA**
- **17,500 miles are owned by townships**
- **Funds are used to implement environmentally sensitive management practices**
- **Funding comes from fuel tax and license fees and flow from State Conservation Commission (Dept of Ag) to county conservation districts to townships**
- **Funding also to DNCR's Bureau of Forestry for dirt road management in state forests**
- **Low volume roads were added to the program in 2015; defined as roads that receive 500 vehicle trips or fewer per day**

On the Ground: In 2017, the DGLVR Program:

- Completed 492 contracts in 333 separate municipalities
- Replaced 98 stream crossings (culverts and bridges)
- Replaced more than 600 road drainage culverts (crosspipes)
- Installed more than 800 new road drainage culverts (crosspipes)
- Placed more than 400,000 tons of road fill
- Placed approximately 80 miles of Driving Surface Aggregate
- Installed more than 18 miles of underdrain

DGLVR Program 2018 Status Map

- 336 Dirt and Gravel Contracts completed in 2017
- 156 LVR Contracts completed in 2017
- 955 municipalities have completed a contract since 1997
- Ⓐ See other side for project descriptions



ENVIRONMENTALLY SENSITIVE MANAGEMENT PRACTICES



- Road/stream crossings
- Road surface
- Road base
- Vegetation management
- Road bank management
- Road ditch and outlet stabilization
- Off right-of-way practices
- Paved low volume road practices

WHAT HAPPENS AT THE COUNTY LEVEL

- **Trained conservation district staff to administer the program**
- **Adopt QA/QC requirements and ranking criteria approved by the district's Quality Assurance Board**
- **All local government entities and road-owning entities are eligible.**
- **Ensure that one person who is going to oversee the project completes the two-day training course.**

CHESTER COUNTY DGLVR PROGRAM

Budget 2018-2019

- \$100,000 for dirt roads
- \$226,983 for low volume roads

Projects completed to date:

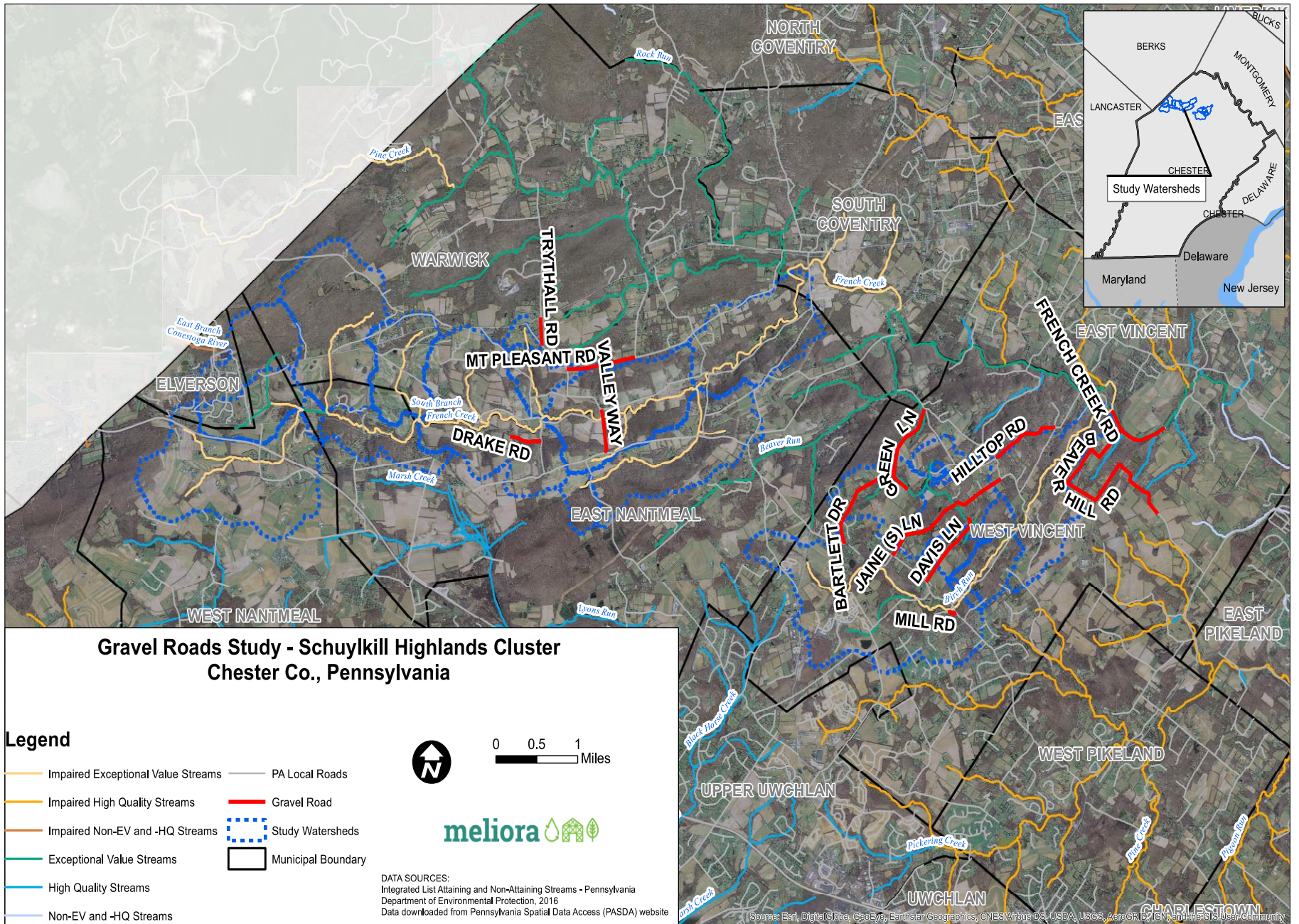
- 32 dirt and gravel road projects covering 12 miles
Total expenditures: \$590,365
- 4 low volume road projects covering 2 miles
Total expenditures: \$726,197



CHESTER COUNTY CONSERVATION DISTRICT CRITERIA

- **Special protection waters**
- **Proximity of project area to the stream**
- **Improved public safety**
- **Benefits for downstream fish populations**
- **Abatement of stormwater velocity or volume**
- **New entity to program**
- **Negative impact on water quality**
- **Any required permits completed**





Gravel Roads Study - Schuylkill Highlands Cluster Chester Co., Pennsylvania

Legend

- Impaired Exceptional Value Streams
- Impaired High Quality Streams
- Impaired Non-EV and -HQ Streams
- Exceptional Value Streams
- High Quality Streams
- Non-EV and -HQ Streams
- PA Local Roads
- Gravel Road
- Study Watersheds
- Municipal Boundary



0 0.5 1 Miles



DATA SOURCES:
Integrated List Attaining and Non-Attaining Streams - Pennsylvania
Department of Environmental Protection, 2016
Data downloaded from Pennsylvania Spatial Data Access (PASDA) website

Source: Esri, DigitalGlobe, GeoEye, Earthstar Geographics, CNES/Airbus DS, USDA, USGS, AeroGRID, IGN, and the GIS User Community

WARWICK FURNACE



FRENCH AND PICKERING CREEKS CONSERVATION TRUST'S PRESERVE



BROWER'S BRIDGE



VALLEY WAY ROAD

